

# Sentence SCRAMBLE

# Winter



**Winter**

and paste the word cards in  
correct order.

Write the sentence.

Can on ice? the fish he

**Winter**

Name \_\_\_\_\_

Can he fish on the ice?

Cut and paste the word cards in  
correct order.

Write the sentence.

Can on ice? the fish he



**Thank you** for downloading this product; I hope you will enjoy using it and that it will be a valuable resource for you! I value your feedback, so please don't hesitate to contact me if you have any concerns whatsoever as I will endeavour to address them. And if you like what I've done, please let me know by leaving feedback at my online store :)

Lavinia

[lavinia@kinder-resources.com](mailto:lavinia@kinder-resources.com)



[Kinder-Resources.com](http://Kinder-Resources.com)

let's connect!



[facebook.com/inmyworldlavinipop](https://facebook.com/inmyworldlavinipop)



[instagram.com/inmyworld\\_lavinipop](https://instagram.com/inmyworld_lavinipop)



[pinterest.com/lavinipop](https://pinterest.com/lavinipop)

**Fonts** [schoolfonts.com.au](http://schoolfonts.com.au)

[teacherspayteachers.com/Store/Kimberly-Geswein-Fonts](https://teacherspayteachers.com/Store/Kimberly-Geswein-Fonts)  
[teacherspayteachers.com/Store/Ramonam-Graphics](https://teacherspayteachers.com/Store/Ramonam-Graphics)

**ILLUSTRATIONS**

Kari Bolt, Little Red, Hidesy's Clipart, Dancing Crayon Designs, Whimsy Clips, PartyHead Graphics, Ramona Majdis, Zip-a-Dee-doo-dah-Designs, Bunny on a Cloud, Krista Wallden - Creative Clips, Creating4 the Classroom, Rainbow Sprinkle Studio - Sasha Mitten, First Class Clipart, Erin Colleen Design

[teacherspayteachers.com/Store/Kari-Bolt](https://teacherspayteachers.com/Store/Kari-Bolt)   [teacherspayteachers.com/Store/Littlered](https://teacherspayteachers.com/Store/Littlered)   [teacherspayteachers.com/Store/Hidesys-Clipart](https://teacherspayteachers.com/Store/Hidesys-Clipart)  
[dancingcrayon.com](https://teacherspayteachers.com/Store/DancingCrayon)   [teacherspayteachers.com/Store/Whimsy-Clips](https://teacherspayteachers.com/Store/Whimsy-Clips)   [teacherspayteachers.com/Store/Partyhead-Graphics](https://teacherspayteachers.com/Store/Partyhead-Graphics)  
[teacherspayteachers.com/Store/Ramona-Majdis](https://teacherspayteachers.com/Store/Ramona-Majdis)   [teacherspayteachers.com/Store/Zip-a-dee-doo-dah-Designs](https://teacherspayteachers.com/Store/Zip-a-dee-doo-dah-Designs)  
[teacherspayteachers.com/Store/Bunny-On-A-Cloud](https://teacherspayteachers.com/Store/Bunny-On-A-Cloud)   [teacherspayteachers.com/Store/Krista-Wallden-Creative-Clips](https://teacherspayteachers.com/Store/Krista-Wallden-Creative-Clips)  
[teacherspayteachers.com/Store/Creating4-The-Classroom](https://teacherspayteachers.com/Store/Creating4-The-Classroom)   [teacherspayteachers.com/Store/Rainbow-Sprinkle-Studio-Sasha-Mitten](https://teacherspayteachers.com/Store/Rainbow-Sprinkle-Studio-Sasha-Mitten)  
[teacherspayteachers.com/Store/First-Class-Clipart](https://teacherspayteachers.com/Store/First-Class-Clipart)   [teacherspayteachers.com/Store/Erin-Colleen-Design](https://teacherspayteachers.com/Store/Erin-Colleen-Design)

This packet contains Images used under license from Shutterstock.com

**PRINTING TIP:** This resource has been designed for printing on A4-sized paper. If you are printing on a different size, select "shrink to printable area" or "print to fit page" (or a similar option) in order for the contents of this unit to print correctly.

Copyright © 2013 by Lavinia Pop - All rights reserved by author.

Purchase of this item entitles the purchaser the right to reproduce the pages for personal and classroom use. Duplication for other classes, an entire school or commercial purposes is strictly prohibited without written permission from the author. Minor editing is permitted only for personal use, however the document remains under copyright even when edited. Posting this item in whole or in part on the Internet in any form is strictly prohibited and is a violation of the Digital Millennium Copyright Act (DMCA).

Please be fair and don't share! If you are not the original purchaser of this file, please visit my store to purchase a copy. [Kinder-Resources.com](http://Kinder-Resources.com)

# Introduction

## About this book:

This book contains a collection of Winter-themed sentence building printables and follow up worksheets intended for use with children in Kindergarten (Prep) and Grade 1.

## Directions for use:

There are a couple of ways in which the contents of this unit can be used to target the different learning levels of students:

1. Sentence Scramble Center: Print the word/picture cards (p. 5-14) and laminate them for durability. Cut along the dotted lines to separate them. Each one is numbered to show the ones that belong together in a sentence. The aim is for children to arrange the cards to build a sentence, and then complete the corresponding cut and paste sheet from the first set of worksheets (p. 15-43).

2. Cut and Paste Word Work: This activity (p. 44-72) is an easier alternative for children who cannot yet build sentences independently; they use the sentence on each page as a guide to order the words correctly. Using the word/picture cards for this activity is optional; set up is as outlined above.

The worksheets in this book can be used while working with the entire class, in small groups, or individually. They can also be assigned as homework for additional practice to reinforce sight words and vocabulary learnt in the classroom.

Happy Teaching :)

# Sentences Included

1. It is very cold in winter.
2. I see a snowflake on the window.
3. My snowman has a blue hat.
4. She got hit with a snowball.
5. Did Bob get a red scarf?
6. Tim has a big snowball.
7. Can he fish on the ice?
8. She likes to go sledding.
9. Pam has green boots.
10. That boy is good at ice hockey.
11. We can make a snow fort.
12. Ken has on blue mittens.
13. Who put marshmallows in my hot chocolate?
14. The snowman is melting!
15. Will the girl make a snow angel?
16. Bears sleep in the winter.
17. The arctic fox likes to ski.
18. The caribou has a shovel.
19. Is the arctic hare is on the sled?
20. The penguin has a little egg!
21. I see a little penguin!
22. We like to ice skate.

1

**It**

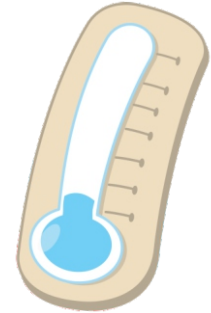
1

**is**

1

**very**

1



**cold**

1

**in**

1



**winter.**

2

**I**

2

**see**

2

**a**

2



**snowflake**

2

**on**

2

**the**

2



window.

3

My

3



snowman

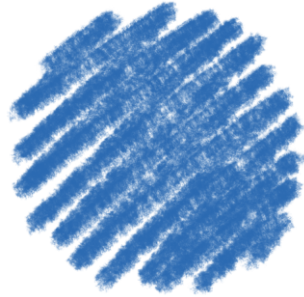
3

has

3

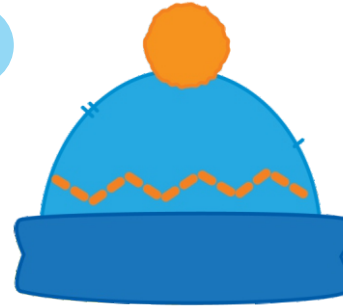
a

3



blue

3



hat.

4

She

4

got

4



hit

4

with

4

a



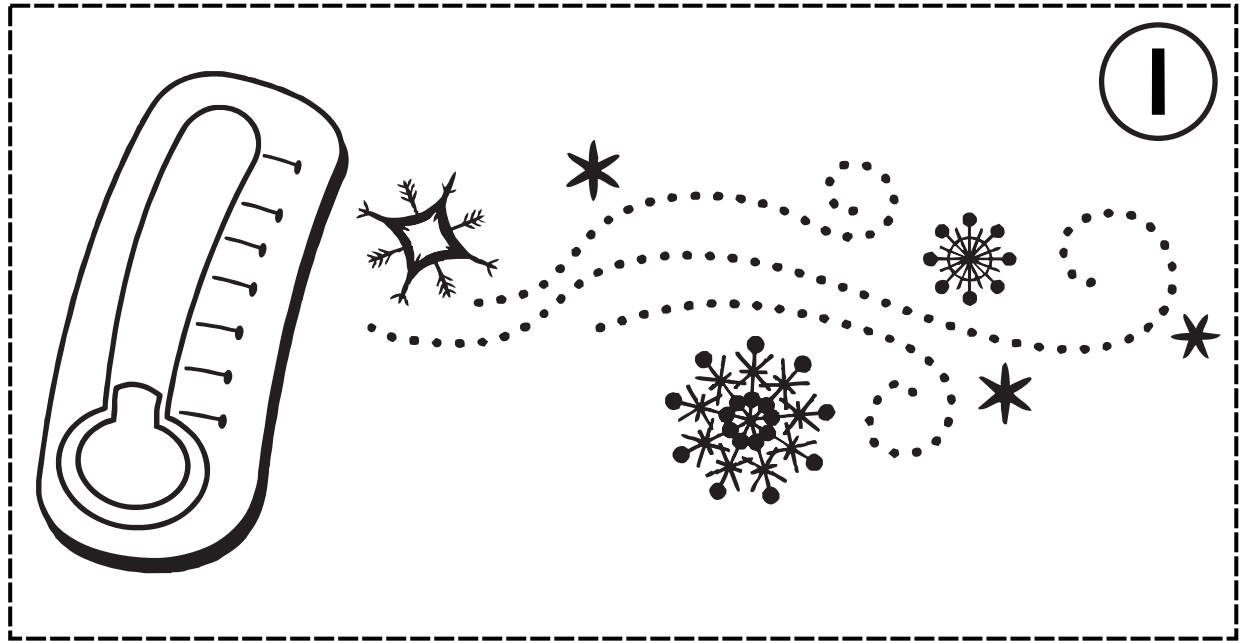
# Winter

Name

|  |
|--|
|  |
|--|



Cut and paste the word cards in correct order.



|  |  |  |  |  |  |
|--|--|--|--|--|--|
|  |  |  |  |  |  |
|--|--|--|--|--|--|



Write the sentence.

|  |
|--|
|  |
|  |
|  |



**cold**

**is**

**in**

**It**

**very**

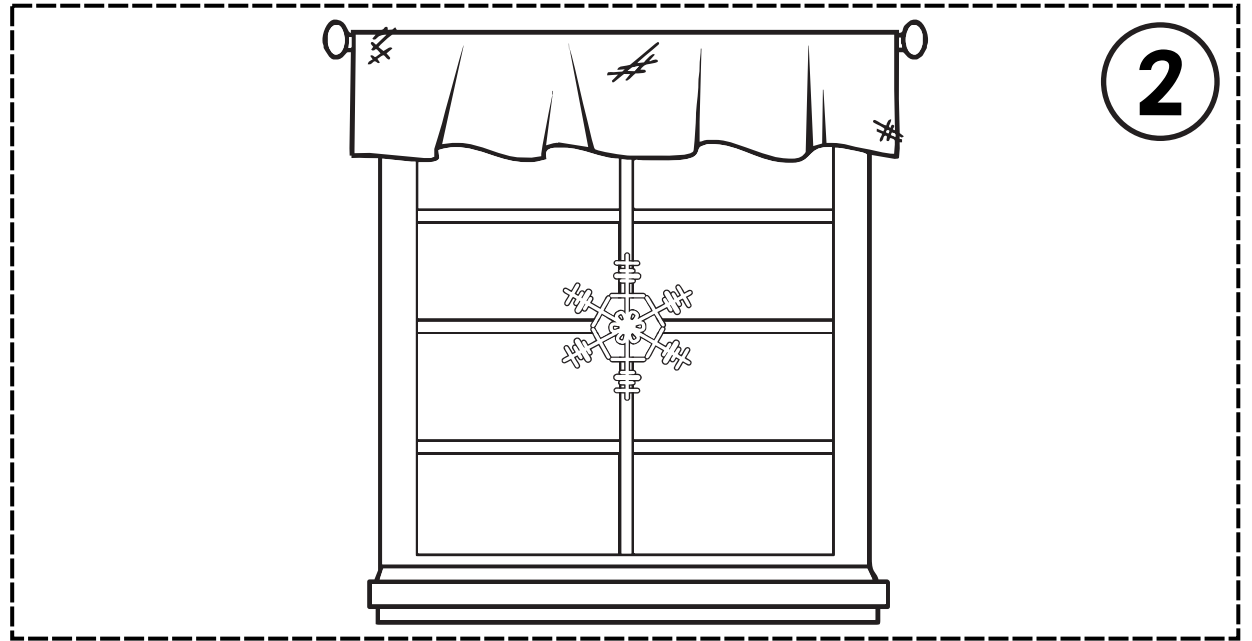
**winter.**

# Winter

Name



Cut and paste the word cards in correct order.



|  |  |  |  |  |  |  |
|--|--|--|--|--|--|--|
|  |  |  |  |  |  |  |
|--|--|--|--|--|--|--|



Write the sentence.



the

see

on

a

snowflake

I

window.



# Winter

Name

|  |
|--|
|  |
|--|



Cut and paste the word cards in correct order.



3

|  |  |  |  |  |  |
|--|--|--|--|--|--|
|  |  |  |  |  |  |
|--|--|--|--|--|--|



Write the sentence.

|  |
|--|
|  |
|  |
|  |



hat.

has

snowman

a

blue

My

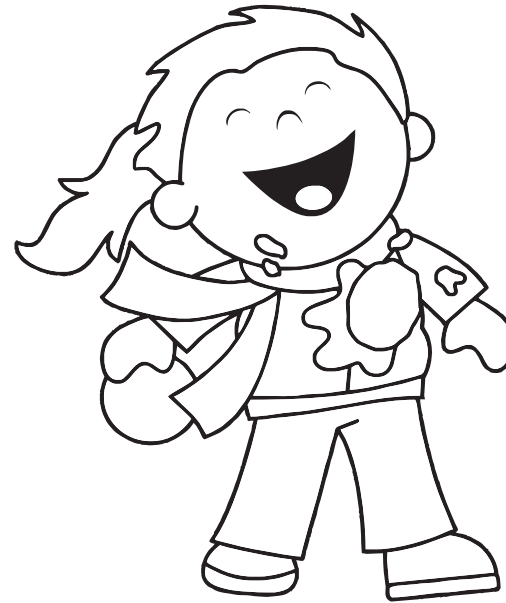
# Winter

Name

|  |
|--|
|  |
|--|



Cut and paste the word cards in correct order.



4

|  |  |  |  |  |  |
|--|--|--|--|--|--|
|  |  |  |  |  |  |
|--|--|--|--|--|--|



Write the sentence.

|  |
|--|
|  |
|  |
|  |



with

She

a

got

snowball.

hit

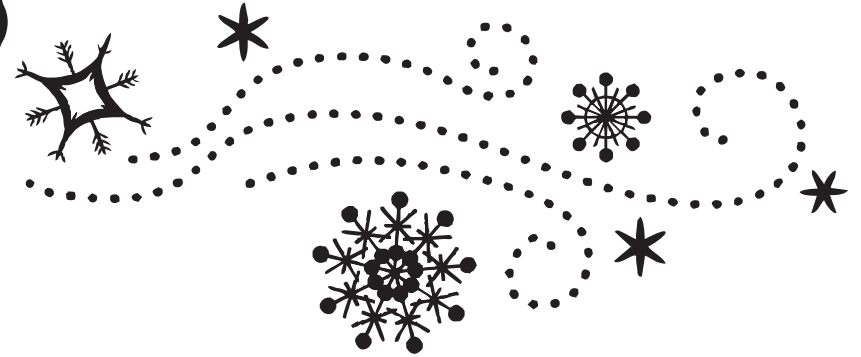
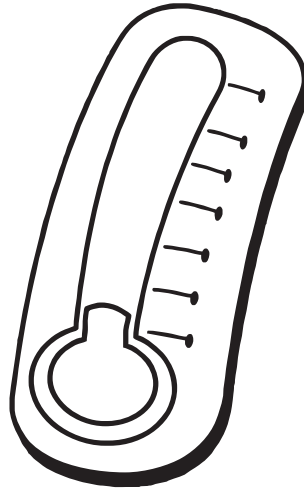
# Winter

Name

|  |
|--|
|  |
|--|



Cut and paste the word cards in correct order.



**It is very cold in winter.**

|  |  |  |  |  |  |
|--|--|--|--|--|--|
|  |  |  |  |  |  |
|--|--|--|--|--|--|



Write the sentence.

|  |
|--|
|  |
|  |
|  |



**cold**

**is**

**in**

**It**

**very**

**winter.**

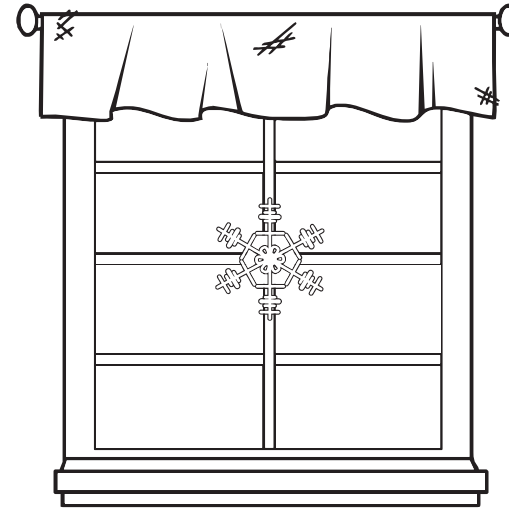
# Winter

Name

|  |
|--|
|  |
|--|



Cut and paste the word cards in correct order.



**I see a snowflake on the window.**

|  |  |  |  |  |  |  |
|--|--|--|--|--|--|--|
|  |  |  |  |  |  |  |
|--|--|--|--|--|--|--|



Write the sentence.

|  |
|--|
|  |
|  |
|  |



**the**

**see**

**on**

**a**

**snowflake**

**I**

**window.**

# Winter

Name



Cut and paste the word cards in correct order.



**My snowman has a blue hat.**

|  |  |  |  |  |  |
|--|--|--|--|--|--|
|  |  |  |  |  |  |
|--|--|--|--|--|--|



Write the sentence.



**hat.**

**has**

**snowman**

**a**

**blue**

**My**

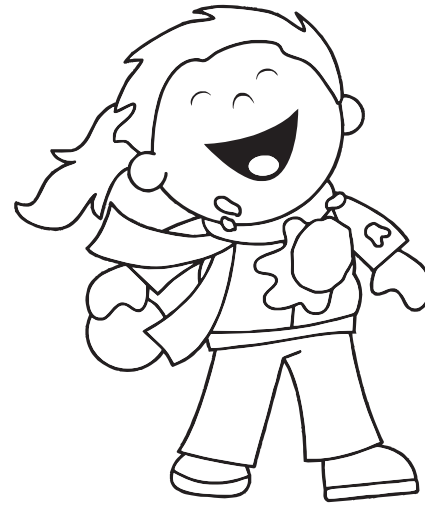
# Winter

Name

|  |
|--|
|  |
|--|



Cut and paste the word cards in correct order.



**She got hit with a snowball.**

|  |  |  |  |  |  |
|--|--|--|--|--|--|
|  |  |  |  |  |  |
|--|--|--|--|--|--|



Write the sentence.

|  |
|--|
|  |
|  |
|  |



**with**

**She**

**a**

**got**

**snowball.**

**hit**