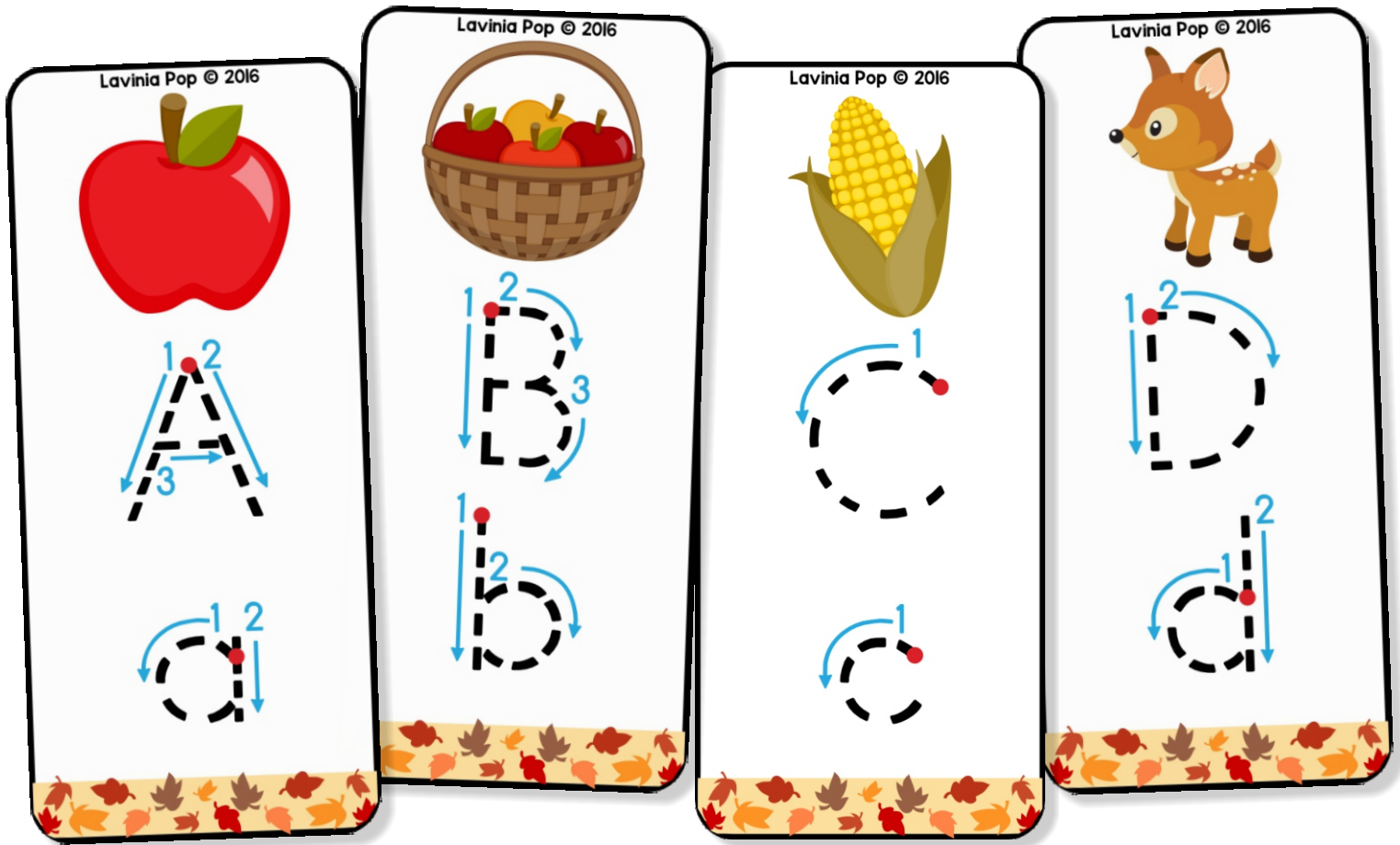


autumn alphabet

TRACING CARDS

upper and lower case letters with correct letter formation





Kinder-Resources.com

Thank you for downloading this product; I hope you will enjoy using it and that it will be a valuable resource for you! I value your feedback, so please don't hesitate to contact me if you have any concerns whatsoever as I will endeavour to address them. And if you like what I've done, please let me know by leaving feedback at my online store :)

Lavinia

lavinia@kinder-resources.com

ILLUSTRATIONS Kari Bolt, Little Red, Hidesy's Clipart, Dancing Crayon Designs, Whimsy Clips, PartyHead Graphics, Ramona Majdis, Zip-a-Dee-doo-dah-Designs, Bunny on a Cloud, Krista Wallden - Creative Clips, Creating4 the Classroom, Rainbow Sprinkle Studio - Sasha Mitten, First Class Clipart, Erin Colleen Design

[teacherspayteachers.com/Store/Kari-Bolt](https://www.teacherspayteachers.com/Store/Kari-Bolt) [teacherspayteachers.com/Store/Littered](https://www.teacherspayteachers.com/Store/Littered) [teacherspayteachers.com/Store/Hidesys-Clipart](https://www.teacherspayteachers.com/Store/Hidesys-Clipart)
[dancingcrayon.com](https://www.dancingcrayon.com) [teacherspayteachers.com/Store/Whimsy-Clips](https://www.teacherspayteachers.com/Store/Whimsy-Clips) [teacherspayteachers.com/StorePartyhead-Graphics](https://www.teacherspayteachers.com/Store/Partyhead-Graphics)
[teacherspayteachers.com/Store/Ramona-Majdis](https://www.teacherspayteachers.com/Store/Ramona-Majdis) [teacherspayteachers.com/Store/Zip-a-dee-doo-dah-Designs](https://www.teacherspayteachers.com/Store/Zip-a-dee-doo-dah-Designs)
[teacherspayteachers.com/Store/Bunny-On-A-Cloud](https://www.teacherspayteachers.com/Store/Bunny-On-A-Cloud) [teacherspayteachers.com/Store/Krista-Wallden-Creative-Clips](https://www.teacherspayteachers.com/Store/Krista-Wallden-Creative-Clips)
[teacherspayteachers.com/Store/Creating4-The-Classroom](https://www.teacherspayteachers.com/Store/Creating4-The-Classroom) [teacherspayteachers.com/Store/Rainbow-Sprinkle-Studio-Sasha-Mitten](https://www.teacherspayteachers.com/Store/Rainbow-Sprinkle-Studio-Sasha-Mitten)
[teacherspayteachers.com/Store/First-Class-Clipart](https://www.teacherspayteachers.com/Store/First-Class-Clipart) [teacherspayteachers.com/Store/Erin-Colleen-Design](https://www.teacherspayteachers.com/Store/Erin-Colleen-Design)

This packet contains Images used under license from Shutterstock.com

FONTS [schoolfonts.com.au](https://www.schoolfonts.com.au) [teacherspayteachers.com/Store/Kimberly-Geswein-Fonts](https://www.teacherspayteachers.com/Store/Kimberly-Geswein-Fonts)
[teacherspayteachers.com/Store/Ramonam-Graphics](https://www.teacherspayteachers.com/Store/Ramonam-Graphics)

PRINTING TIP This resource has been designed for printing on A4-sized paper. If you are printing on a different size, select "shrink to printable area" or "print to fit page" (or a similar option) in order for the contents of this unit to print correctly.

Copyright © 2016 by Lavinia Pop - All rights reserved by author.

Purchase of this item entitles the purchaser the right to reproduce the pages for personal and classroom use. Duplication for other classes, an entire school or commercial purposes is strictly prohibited without written permission from the author. Minor editing is permitted only for personal use, however the document remains under copyright even when edited. Posting this item in whole or in part on the Internet in any form is strictly prohibited and is a violation of the Digital Millennium Copyright Act (DMCA).

Please be fair and don't share! If you are not the original purchaser of this file, please visit my store to purchase a copy. [Kinder-Resources.com](https://www.Kinder-Resources.com)

let's connect!



[Kinder-Resources.com](https://www.Kinder-Resources.com)



facebook.com/KinderResources



instagram.com/laviniapop_kinder_resources



pinterest.com/laviniapop

INTRODUCTION

Enhance letter learning with the Autumn Alphabet Tracing Cards! Perfect for preschool and kindergarten students, this engaging, fall-themed resource is designed to make practicing the alphabet fun and interactive.

Features:

- **26 alphabet tracing cards:** This set includes 26 individual cards, each with a charming autumn-themed border to make learning more visually engaging. Each card showcases a picture that corresponds with the beginning sound of the letter.
- **Uppercase and lowercase Letters:** Each card provides space for tracing both uppercase and lowercase letters. The cards also include directional arrows to guide proper letter formation.
- **Alternative letter formations:** To accommodate different handwriting styles, alternative formations are included for letters H, J, M, N, q, V, and W. This allows for flexibility and helps meet the diverse needs of learners as they practice forming letters correctly.

How to Use:

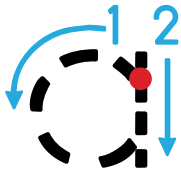
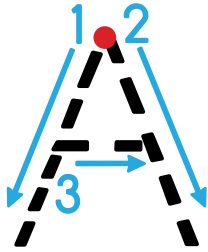
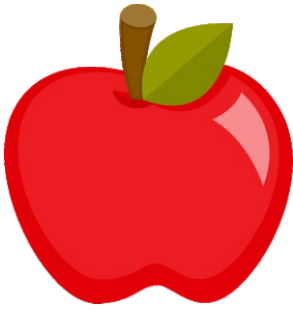
- **Preparation:** Print and laminate the cards for durability, then cut them apart along the dashed lines. Punch a hole in the top of each card and use a key ring or pipe cleaner to keep them together.
- **Activity:** Give children dry-erase markers and encourage them to trace the letters on each card multiple times. Remind them to follow the directional arrows.

Educational Benefits:

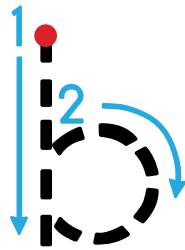
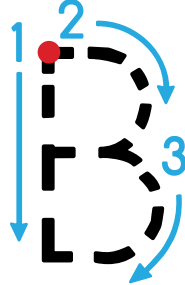
- **Letter recognition:** Supports children in identifying and differentiating between uppercase and lowercase letters.
- **Phonics skills:** Beginning sound pictures help children associate letters with their corresponding sounds, enhancing early phonics skills.
- **Handwriting practice:** Tracing letters according to directional arrows helps children develop correct handwriting and letter formation.
- **Fine motor skills:** Repeated tracing strengthens hand muscles, promoting better fine motor coordination.

Happy Teaching :)

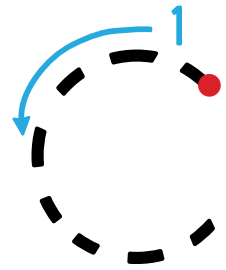
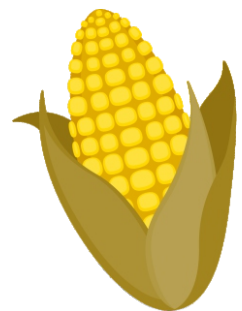
Lavinia Pop © 2016



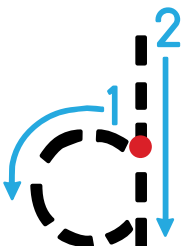
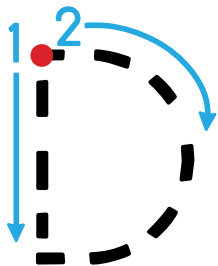
Lavinia Pop © 2016



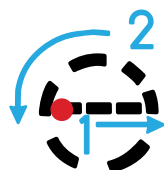
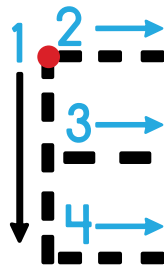
Lavinia Pop © 2016



Lavinia Pop © 2016



Lavinia Pop © 2016



Lavinia Pop © 2016

