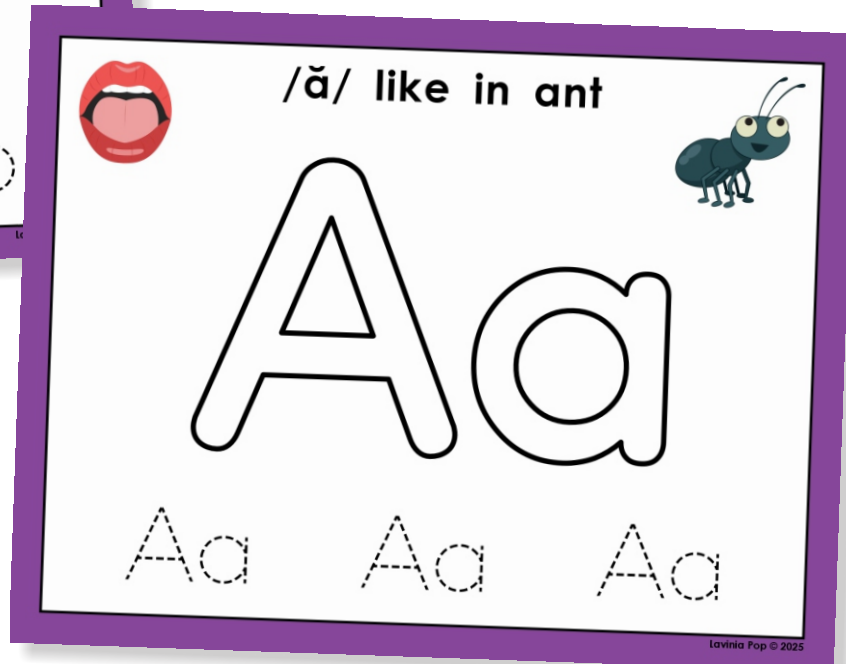
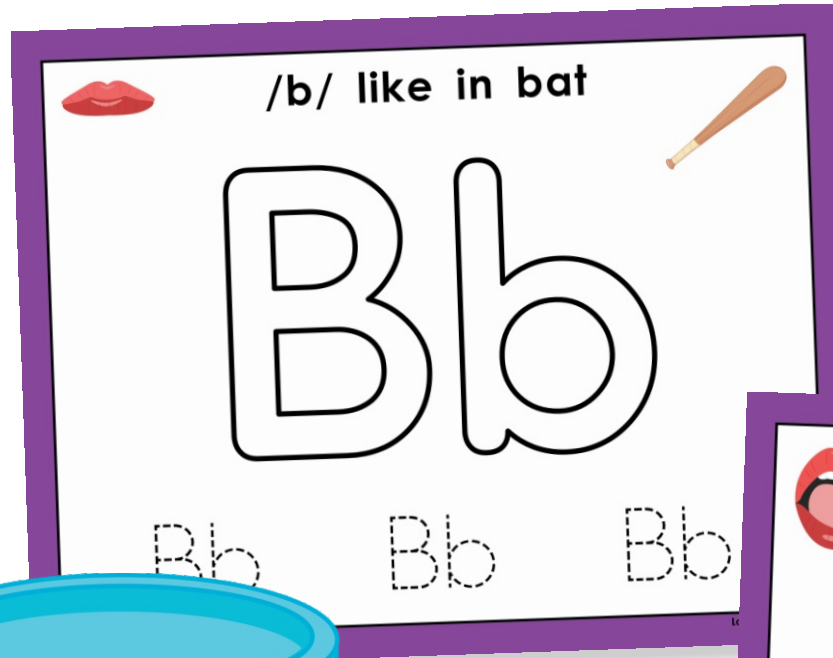


alphabet

SoR ALIGNED

PLAY DOUGH MATS

26 Letters | Keyword Pictures | Mouth Cues | Tracing



Thank you for downloading this product; I hope you will enjoy using it and that it will be a valuable resource for you! I value your feedback, so please don't hesitate to contact me if you have any concerns whatsoever as I will endeavour to address them. And if you like what I've done, please let me know by leaving feedback at my online store :)

let's connect!

Lavinia

lavinia@kinder-resources.com



Kinder-Resources.com



facebook.com/KinderResources



instagram.com/lavinia_pop_kinder_resources



pinterest.com/lavinia_pop

ILLUSTRATIONS Kari Bolt, Little Red, Hidesy's Clipart, Dancing Crayon Designs, Whimsy Clips, Christine O'Brien, Ramona Majdis, Zip-a-Dee-doo-dah-Designs, Bunny on a Cloud, Krista Wallden - Creative Clips, Creating4 the Classroom, Rainbow Sprinkle Studio - Sasha Mitten, Erin Colleen Design

teacherspayteachers.com/Store/Kari-Bolt teacherspayteachers.com/Store/Littlered teacherspayteachers.com/Store/Hidesys-Clipart dancingcrayon.com

teacherspayteachers.com/Store/Whimsy-Clips teacherspayteachers.com/store/christine-obrien-creative teacherspayteachers.com/Store/Ramona-Majdis

teacherspayteachers.com/Store/Zip-a-dee-doo-dah-Designs teacherspayteachers.com/Store/Bunny-On-A-Cloud teacherspayteachers.com/Store/Krista-Wallden-Creative-Clips

teacherspayteachers.com/Store/Creating4-The-Classroom teacherspayteachers.com/Store/Rainbow-Sprinkle-Studio-Sasha-Mitten teacherspayteachers.com/Store/Erin-Colleen-Design

This packet contains Images used under license from Shutterstock.com

FONTS schoolfonts.com.au teacherspayteachers.com/Store/Kimberly-Geswein-Fonts teacherspayteachers.com/Store/Ramonam-Graphics
teacherspayteachers.com/store/kaitlynn-albani

PRINTING TIP This resource has been designed for printing on Letter-sized paper. If you are printing on a different size, select "shrink to printable area" or "print to fit page" (or a similar option) in order for the contents of this unit to print correctly.

Copyright © 2012 by Lavinia Pop - All rights reserved by author.

Purchase of this item entitles the purchaser the right to reproduce the pages for personal and classroom use. Duplication for other classes, an entire school or commercial purposes is strictly prohibited without written permission from the author. Minor editing is permitted only for personal use, however the document remains under copyright even when edited. Posting this item in whole or in part on the Internet in any form is strictly prohibited and is a violation of the Digital Millennium Copyright Act (DMCA).

Please be fair and don't share! If you are not the original purchaser of this file, please visit my store to purchase a copy. Kinder-Resources.com

Introduction

Build Strong Sound-to-Letter Connections with These Science of Reading-Aligned Alphabet Play Dough Mats!

These alphabet mats are a hands-on way to teach letter formation and phoneme-grapheme correspondence while developing fine motor skills in young learners.

Each mat focuses on one letter of the alphabet and includes:

- A large uppercase and lowercase letter to build with play dough
- A clear phoneme prompt (e.g., /b/ like in bat)
- A keyword image that represents a fully decodable word
- A mouth formation visual to support articulation and sound production
- Dotted tracing letters for extra handwriting and fine motor practice

Children don't just learn what the letter looks like—they learn how it sounds, how to say it, and how to write it.

Why These Mats Are SoR-Aligned

This set aligns with Science of Reading best practices by:

- Teaching one sound per letter in isolation (especially helpful for early vowels and consonants)
- Using decodable keywords to strengthen phoneme awareness and early reading
- Including articulation support through mouth formation visuals
- Providing explicit visual support for both uppercase and lowercase letter forms
- Reinforcing sound-symbol understanding through multisensory play

How to Use in Centers

These mats are ideal for literacy centers that support sound-symbol correspondence, fine motor development, and letter formation through independent, hands-on practice. Here's a simple routine you can teach your students:

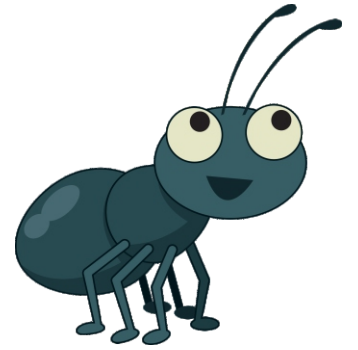
1. **Say the sound:** Begin by looking at the sound prompt at the top of the mat (e.g., /b/ like in bat). Say the sound out loud, pointing to the mouth formation image to help remember how to say it.
2. **Read the sentence:** Read the phoneme prompt together: "/b/ like in bat." Say the keyword again and point to the matching picture. Emphasize that it's a word they can sound out!
3. **Form the letter with play dough:** Roll long play dough "snakes" and shape them to match the large uppercase and lowercase letters in the center of the mat. As they form each letter, students should say the sound aloud again to reinforce the connection.
4. **Trace the letter:** Use a dry-erase marker to trace over the dotted uppercase and lowercase letters at the bottom of the mat. Encourage students to start at the correct point and follow the proper stroke direction if shown.
5. **Repeat the sound:** After completing each mat, have students say the letter sound one more time to reinforce learning through repetition.
reach for again and again.

Whether you're introducing letters for the first time or supporting beginning readers who need more targeted phonics practice, these mats are a flexible, low-prep tool you'll turn to again and again.

Happy Teaching! :)



/ă/ like in ant



Aa

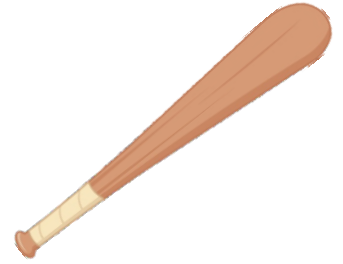
Aa

Aa

Aa



/b/ like in bat



Bb

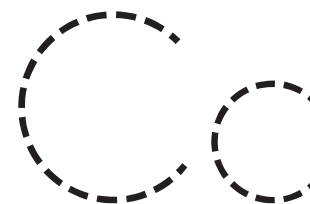
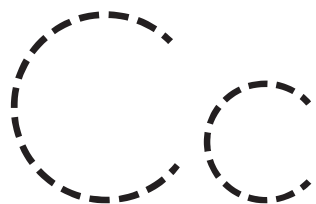
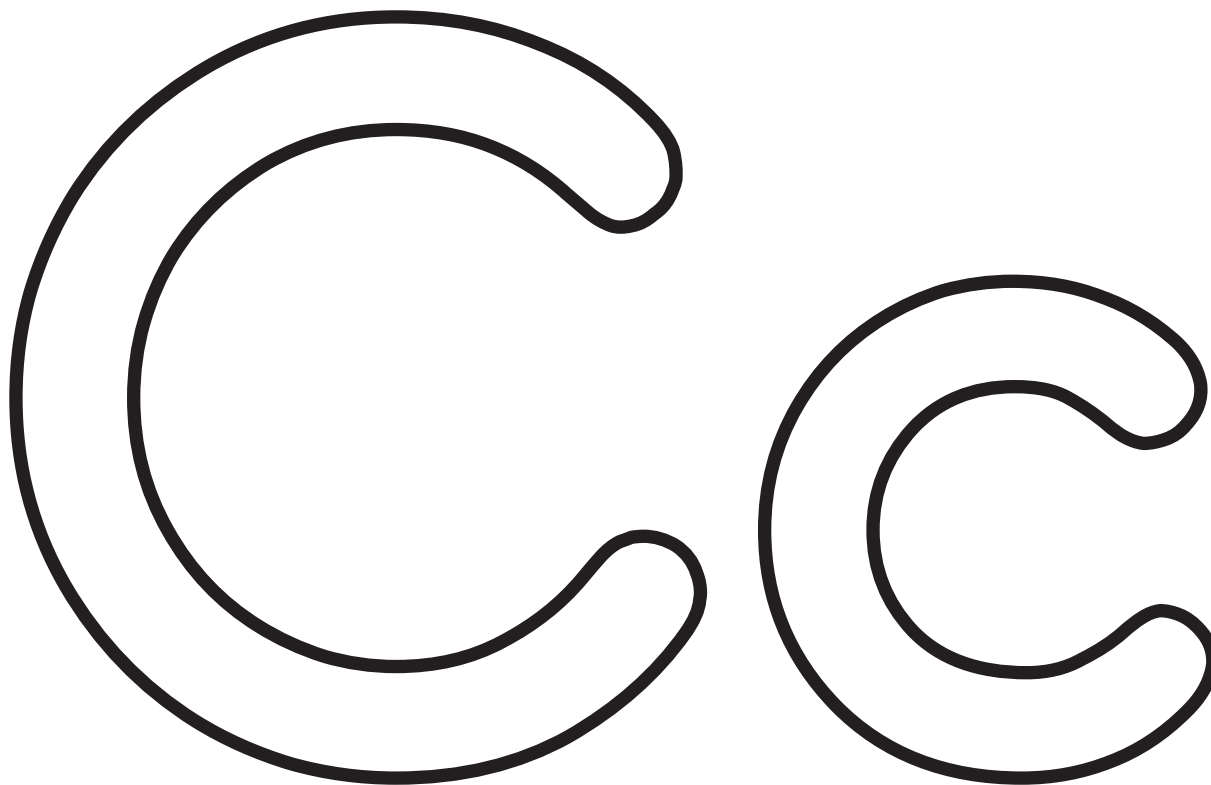
Bb

Bb

Bb



/k/ like in cat





/d/ like in dog



Dd

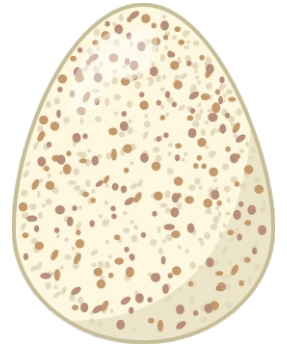
Dd

Dd

Dd



/ě/ like in dog



Ee

Ee

Ee

Ee